



# The modern classroom

Solutions for your school



# Contents

## **Creating the modern classroom**

### **Cloud and compute**

Microsoft Surface

### **Connectivity**

Cisco Meraki

### **AV/collaboration**

CommBox

### **STEM, STEAM and Esports**

STM

Wacom

### **Everything else**

PC Locs

# Creating the modern classroom

## Learning without limits

**The modern classroom is a connected, intelligent space where teachers and students engage, collaborate and learn seamlessly from anywhere.**

This catalogue features a selection of the best range of products, services and support for your school and students, from the leaders in education technology.

Make the user experience seamless – powered by resilient network infrastructure and fit-for-purpose technology.

Creating the modern classroom is not a one-size-fits-all exercise. It requires the right mix of solutions for now and the future.

JB Hi-Fi Solutions has more than 21 years' experience supporting the Australian education sector with technology solutions that provide richer learning opportunities, increase productivity and achieve new educational excellence benchmarks.

**For more information about how we can help you create modern learning environments that empower educators and inspire students:**

- visit our Resources Hub for Schools [solutions.jbhifi.com.au/resources-for-schools/](https://solutions.jbhifi.com.au/resources-for-schools/)
- talk to an Education Specialist today on 1300 730 548

## Southern Cross Grammar: Case study

Southern Cross Grammar partnered with JB Hi-Fi Education Solutions to update the school's network infrastructure and create a world-class, modern learning environment.

**"The JB Hi-Fi Educations Solutions team has always gone above and beyond in providing sophisticated technologies for our school to continue providing high quality teaching and learning experiences for our community."**



**Chris Mitchell**

IT Manager  
Southern Cross Grammar

# Cloud and compute

## Learning without limits

**Empower your educators and students and free up your IT specialists and administrators with end-to-end technology solutions that deliver outstanding learning for today and tomorrow.**

Deliver an excellent user experience, with the whole school community using the right tools on the right devices, from the right location.

Simplify education technology with solutions that are cost-effective, consistent, centrally managed, provisioned on demand, and accessible anywhere, anytime.

## Solutions

- Tablets, laptops and desktops
- Device as a Service (DaaS)
- SOE Creation and Management
- Device Management and Lifecycle
- Modern Management – Auto Pilot
- Office 365

## Strategic partners

- Microsoft
- + many more



# Microsoft Surface

## The versatility of Microsoft Surface for teachers and students

Surface devices, Windows 11 and Microsoft 365 work together to provide schools with more engaging, rewarding, and highly secure digital classroom experiences.

Microsoft Surface devices and accessories offer the ultimate in versatility and flexibility for classrooms and beyond. Whether you want a laptop, touchscreen, pen-enabled device or even a 2-in-1, the Surface family has something for every type of learner and teacher – without scrimping on performance or power.



Surface Go 3



Surface Pro 7+



Surface Laptop 4



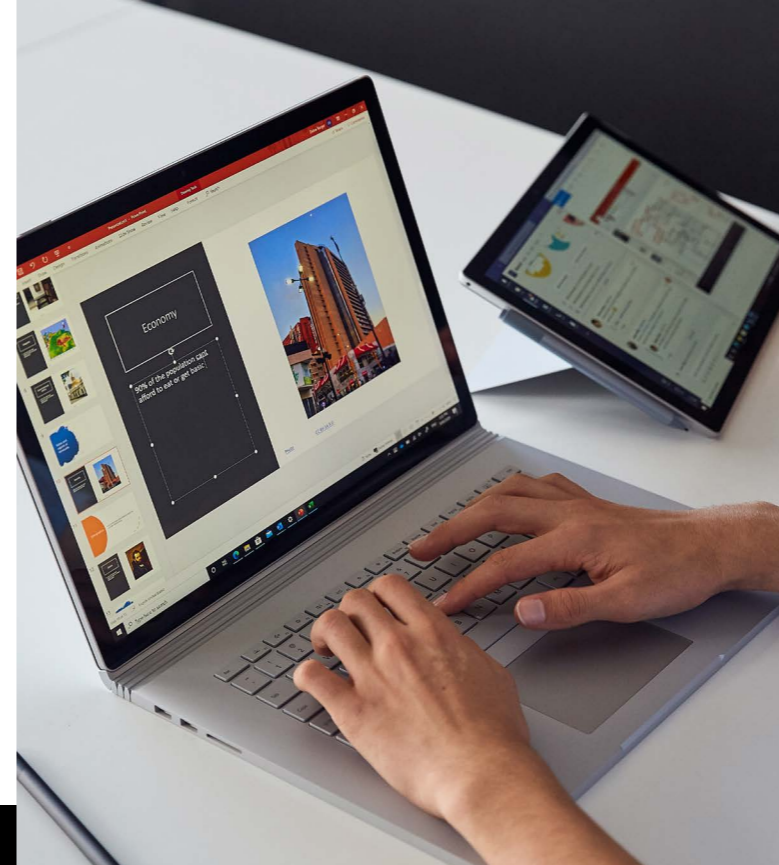
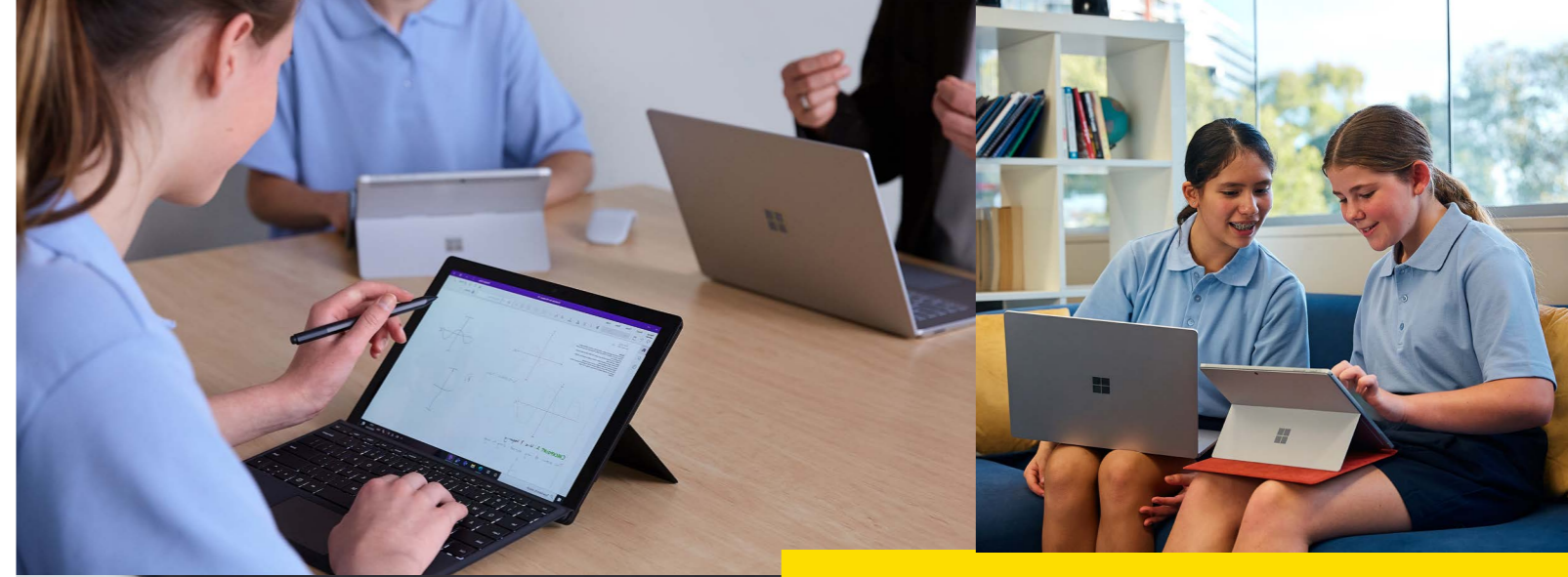
Surface Laptop Go



Surface Pro 8



Surface Laptop Studio



Surface + Microsoft 365 + Autopilot  
+ JB Hi-Fi Solutions  
**= Best in class execution**

- Supporting Schools with future ready technology that drives student outcomes, staff and teacher retention and satisfaction, and access to data led insights to improve operations
- Supporting students with devices built to work hard and play hard, with full day battery life and commercial warranty. Achieve more every day with one device that does everything
- Supporting IT with secure, reliable devices and deployment solutions or streamlined and simple management

**Digital learning is key to driving academic outcomes. With Microsoft Surface, be inspired through the changing ways you study and work.**

### Schools with Surface devices experience

**58%** reduction in printing

**25%** less daily prep time

**30 minutes** more daily teaching time

**50%** reduction in ICT time

**94%** say stylus and touch improved quality of instruction

**PLUS 90%** of parents said Surface exceeded their expectations

\* Total Economic Impact (TEI) analysis conducted by Forrester Consulting, "Maximizing Your ROI from Microsoft 365 Microsoft Surface", July 2020.

### Microsoft Surface delivers

- All-day battery life, fast charges to 80% in an hour
- Performance and power for every level of learning
- Positive interactive experiences with touchscreen and inking (\*inking not available with Surface Laptop Go)
- Cloud productivity tools that are always instantly available for editing, sharing and collaborating
- Be heard. Be seen. Quality cameras and mics
- Additional warranty options available to purchase providing additional coverage up to 4 years, including accidental damage protection

### Surface Laptop Go

Style and learning go great together

Surface Laptop Go offers more space to be productive with a 12.4" touchscreen, narrow bezels and our Surface Signature 3:2 ratio.

If your learning is on the move, Surface Laptop Go will move with you.



### Meet Microsoft Surface Pro 8

The most powerful Pro

Delivering unprecedented levels of performance on a 13" screen, Surface Pro 8 combines the power of a laptop with the flexibility of a tablet and every angle in between with the iconic Kickstand.





# Connectivity

The connected classroom

**Connect your teachers and students across the campus and beyond with devices designed for education and fast, secure network solutions.**

Embrace connectivity to communicate and collaborate seamlessly, access information securely, and engage students anytime, anywhere.

Through strategic partnerships with the world's best vendors, we can create the modern classroom, enabling you to focus on education and deliver outstanding learning today and into the future.

# Network/switching/ wireless

Secure, fast and seamless learning

**Ensure secure connectivity across campus and remotely with networking and wireless solutions that are simple, seamless and effective.**

As remote learning becomes the norm, your students' safety and security has never been more important.

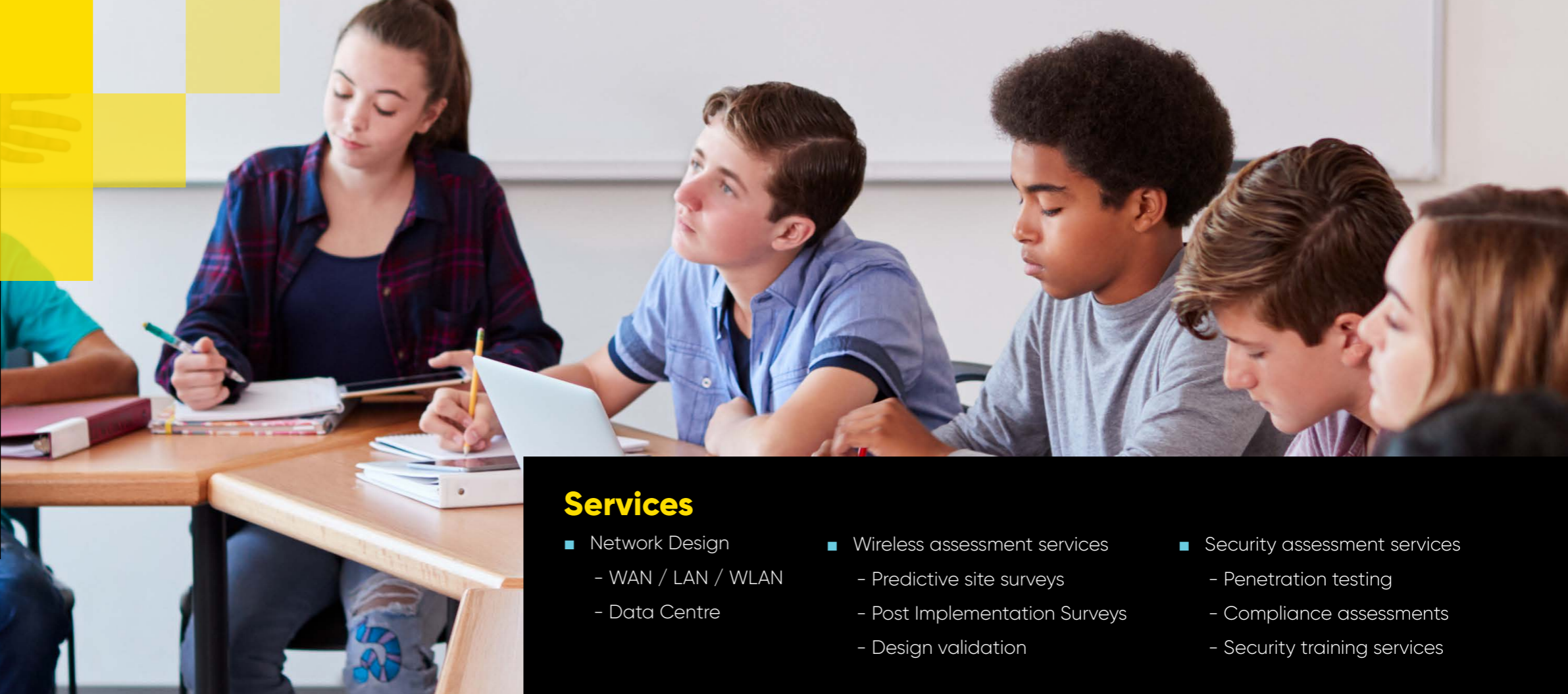
With powerful and reliable network solutions you can rest assured that teachers and students can connect securely and successfully, every time and from anywhere.

## Solutions

- Managed Network Services
  - SD-WAN
  - LAN Switching
  - Wireless Networks
- Managed Cloud Collaboration
  - Cloud Hosted Unified Communications and Collaborations (UCaaS)
  - Cloud Contact Centre
  - Handsets and Accessories

## Strategic partners

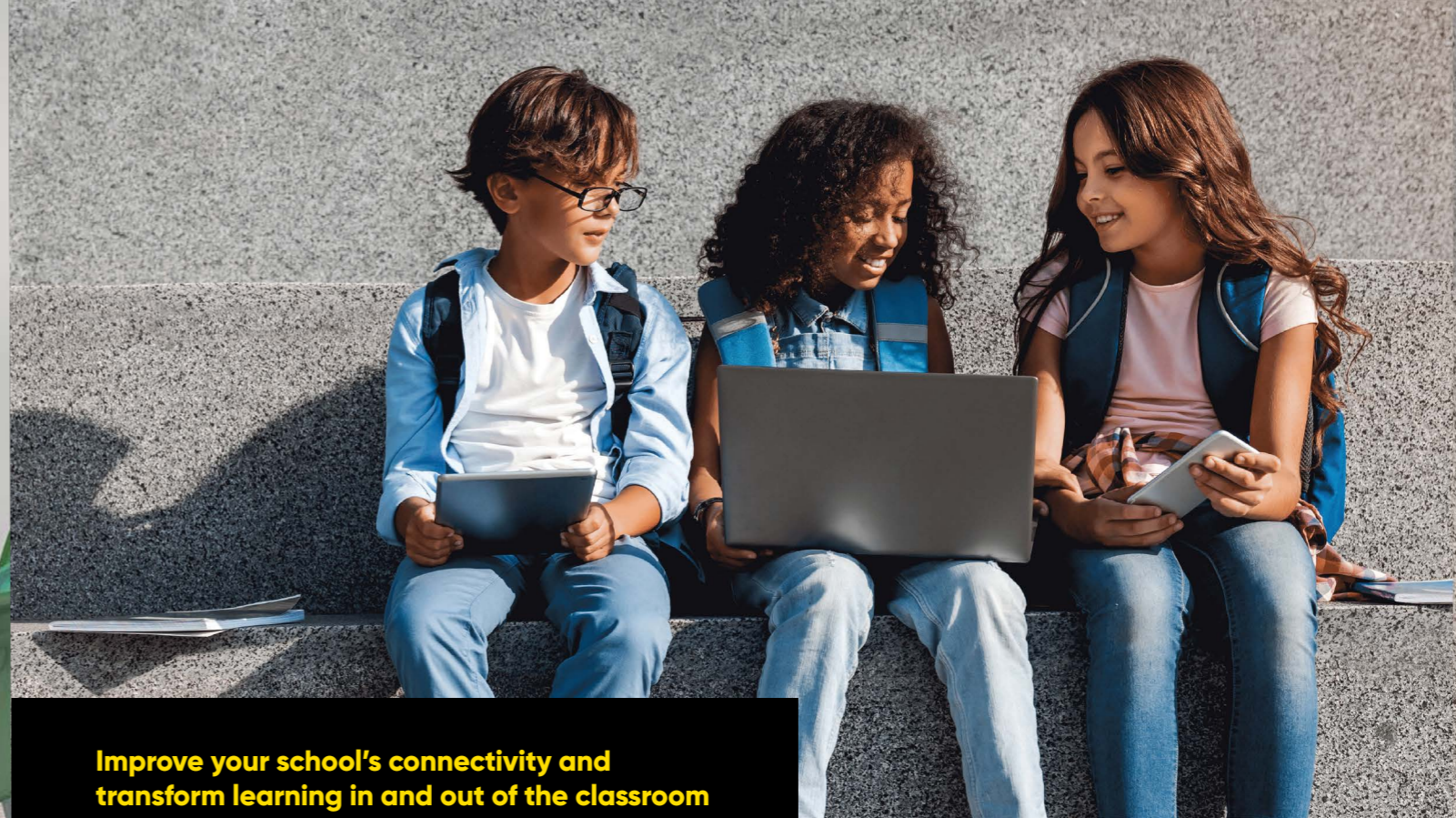
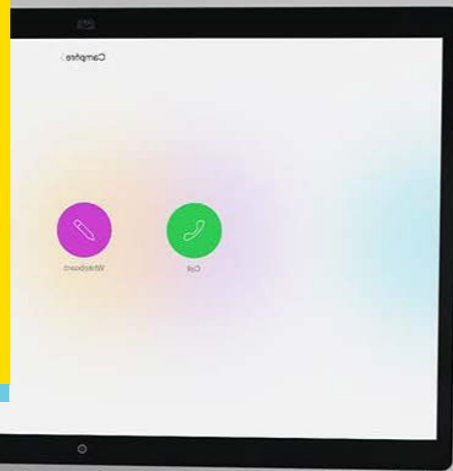
- Cisco Meraki
- + many more



## Services

- Network Design
  - WAN / LAN / WLAN
  - Data Centre
- Wireless assessment services
  - Predictive site surveys
  - Post Implementation Surveys
  - Design validation
- Security assessment services
  - Penetration testing
  - Compliance assessments
  - Security training services

# Cisco Meraki for K-12 education



**Engaged students. Secure classrooms.  
Effortless network management.**

**Future-proof your K-12 school by creating a safe learning environment, improving connectivity and enriching the student experience with Meraki.**

Secure. Engaging. Connected. That's how every learning environment should be, whether it's digital or not. Fortunately, Meraki has your back with a selection of IT solutions designed specifically with the demands of today's K-12 schools in mind, including remote learning, and allowing you to futureproof the entire learning environment. Thanks to an upgradeable software design that supports future applications, you will automatically receive updated Meraki features as they are released without the need for additional costs or licenses.

Now you can create engaging student experiences in a secure environment while leveraging enhanced connectivity across the entire campus. And thanks to streamlined device and network management, your IT team can focus on leveraging technology to make learning more interactive and implementing exciting new initiatives instead of troubleshooting.

## Challenges of a connected learning environment:

- Reliable wireless coverage across the entire campus
- Enhanced security at the user, device, application, perimeter and operating system levels
- Support for 1:1 and BYOD mobile learning initiatives
- Network resiliency and power to easily scale fast performance when required
- Safe IOT traffic containment allowing the devices to run efficiently and securely

**Improve your school's connectivity and transform learning in and out of the classroom**

Start by trying out one (or more) of our FREE Meraki offers for K-12 schools!

## Meraki can help transform your K-12 learning environment across the 3 key areas:

### Enhanced student experience

- Enable learning from anywhere with reliable wired connections and always on wireless coverage
- Block specific applications or put devices on single-app mode, to ensure students are focusing on the correct lesson instead of spending time on social media or playing games
- Engage students by providing reliable access to digital resources in and out of the classroom
- Remotely deploy software, content, and applications to all, or specific, student devices

### Safe learning environment

- Ensure students' physical safety at all times with easy to deploy and manage cameras at a fraction of traditional costs
- Intercept harmful content and unwanted web traffic and prioritise educational apps by leveraging content filtering and application control
- Manage all access points, switches, and security appliances from a single console
- Optimise performance for critical applications without sacrificing security or privacy

### Streamlined device and network management

- Easily and quickly identify network problems from the endpoint to the application server
- Speed up troubleshooting thanks to a holistic view of all that may contribute to end-user's network slow down, including devices, cloud application, state testing sites, and more
- Unify management, control, and security of thousands of iOS, Android, Mac, and PC devices (BYOD included)
- Control all school-owned devices from the same intuitive, cloud-based dashboard



# AV/collaboration

Teaching tools that work

**Deliver outstanding learning in the classroom and beyond by connecting and empowering teachers and students with integrated audio visual solutions that are quick to deploy and simple to use.**

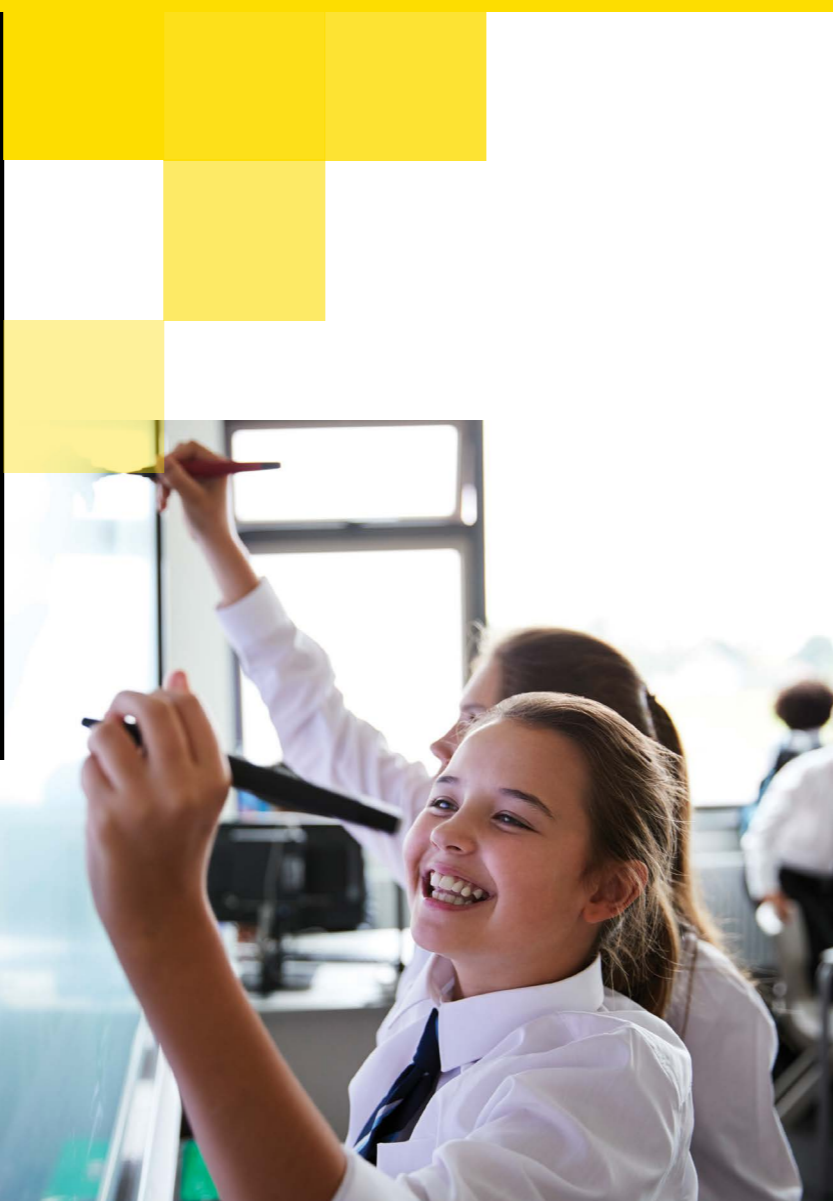
Choose an end-to-end solution from trusted suppliers that works when, where and how you need it to.

## Solutions

- Managed Meeting Room
  - Presentation systems
  - Unified conferencing
  - Control and automation
- Managed Digital signage
  - Content Management Systems
  - Presentation Systems

## Strategic partners

- CommBox
- + many more



# CommBox

**CommBox Interactive Touchscreens empower educators to create impactful, immersive classroom experiences**

### Designed in Australia for Australian classrooms

Providing a simple, intuitive interface that supports pedagogy, CommBox is packed full of features. CommBox touchscreens have UHD 4K resolution, 20-point touch, and premium anti-glare glass. Use the touchscreen solo, connect your device or add the optional PC to the built-in OPS slot. CommBox is software and hardware agnostic and will integrate with everything. Local support and ongoing training are available.



Built-in instant and infinite whiteboarding



Annotate over anything, save and share instantly



Built-in native wireless screensharing with Airserver - Airplay, Chromecast and Miracast with Touchback



Built-in web browser, app store and panel management



Works seamlessly with all your favourite apps



Built in tools inc. planner, floating timer, reveal, calculator, and more



Integrates with Microsoft ink



Airserver built-in



Vivi built-in\*



Clickview built-in\*

## Accessories



CommBox Combi 2-in-1 Stand specifically designed in collaboration with the NSW Department of Education



Focus AI video conference bar for hybrid classrooms



Turn your CommBox into a big screen PC with the addition of an OPS

\*Vivi and Clickview subscription fees applies



# STEM, STEAM and Esports

Creative, engaged and inspired learning

**Embrace creative learning tools and prepare students for careers of the future.**

Project-based learning, problem solving, collaboration and creativity are critical skills for students today and for the workforce of tomorrow.

Science, technology, engineering, maths and the arts (STEM and STEAM) and Esports solutions make teaching and learning collaborative, engaging, exciting and inspiring.

## Solutions

- Huge range of STEAM and Esports products
- Curriculum and lesson plans
- Esports sponsorships and partner

## Strategic partners

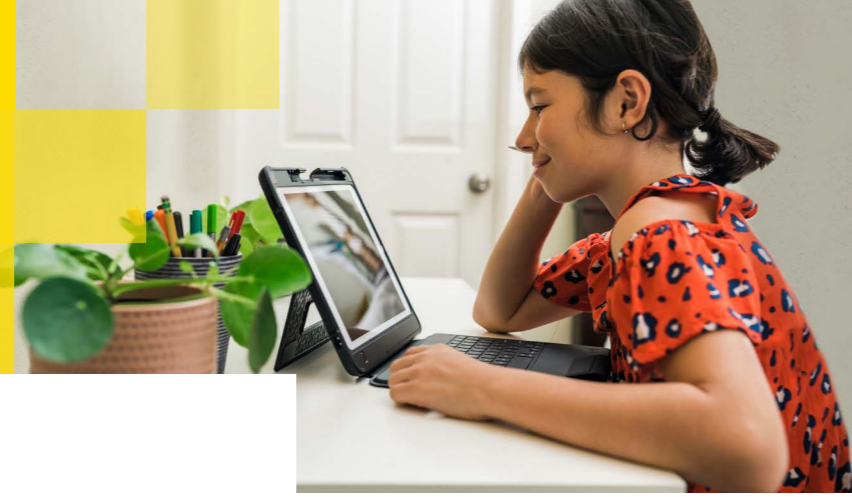
- STM
  - Wacom
- + many more

**Learn how to foster creativity and  
prepare your students for the future.**

[Contact an Education Specialist today.](#)



# STM



## STM makes the difference

STM Goods have been designing lifestyle-oriented laptop bags, iPad cases, iPhone cases and accessories since 1998. Perfect for protecting smart devices on the go, STM's collection is practical and fashion-forward.

### Dux for iPad

9th Gen, 4th Gen Air, iPad Pro 2020, 6th Gen Mini

- Exceeds US Military-spec drop test
- Built-in storage for apple pencil
- Translucent back for ease of asset tagging



### Dux for Surface

For Surface Pro 8 and 7+, Surface Go, Surface Laptop 4 13.5", Laptop go

- Designed for Microsoft Surface
- Exceeds US Military-spec drop test
- Ventilated design allows device to stay cool
- Unobstructed access to all ports and buttons



Exclusive to JB Hi-Fi

### Ace Vertical cargo

Rugged laptop carrying solution

- 360 degree impact protection for 11-14" device
- Removable pouch and 5 year warranty



### Myth range

For teachers and school staff

- 28L and 18L backpacks shoulder bag and sleeve
- Fits most 15" laptops and 16" Macbook Pro

# Wacom



## Pen tablets and displays

Since 1983, Wacom have been designing pen tablets and displays to equip and inspire students around the world to tap into their innate creativity. Mac, PC and Chrome OS compatible.

### One by Wacom

Write or create digitally

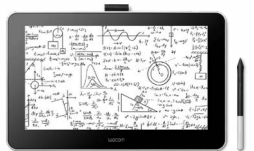
- Sketch, draw, annotate or sign documents with a natural pen experience
- 2048 pressure levels
- Software included



### Wacom One

Draw, annotate and write directly on the display

- 13.3" display
- Natural pen feel
- FHD Resolution
- Software included



### Wacom Intuos Pro

Built for digital artists and designers

- Paper-like feel
- Premium pen technology
- 8,192 pressure levels
- Software included



### Wacom Intuos

Everything you need to create digitally

- 4,096 pressure levels
- Shortcut keys for efficiency
- Software included



### Wacom Cintiq

New class of pen display for creative starters

- 15.6" or 21.5" display
- 8,192 pressure levels
- FHD Resolution
- Software included



## Tablets and displays to make learning and teaching easy

Connect a Wacom device and you're good to go

Hand write and annotate, create graphs and write formulas, collaborate with ideation and visual thinking, point and highlight, and sketch and draw.



# Everything else

Your partner in education  
– and everything else

**Access all the technology your school needs from one trusted source.**

Make purchasing simple through one trusted partner, one contact.

Schools need more than networks, software and devices. Choose from the biggest and best range of products – from devices and printers to whitegoods and musical instruments, and everything in between.



## Solutions

- Education technologies and tools
- Devices and accessories
- Printers
- Whitegoods
- Furniture
- Musical instruments
- Air Conditioning

## Strategic partners

- PC Locs  
+ many more

# PC Locs



## PC Locs is a universal basket capable of accommodating a wide range of mobile devices

**PC Locs develops solutions that empower teachers and enable students to learn more effectively. As technology has evolved over the years, so too have their products which help to make life easier in the classroom.**

The Baskets were designed to enhance the use of mobile devices in the classroom.

One of the most profound impacts they have had in learning environments is the amount of time that's saved when handing out devices at the start of lessons and packing them up at the end.

The positive results for schools are numerous. Teachers can gain up to an additional 70 hours of teaching

time per year for every PC Locs 30 unit Cart that's used compared to a traditional cart.

PC Locs exists to make people's life easier by managing deployments of mobile technology and the people using the mobile technology. Whether your school is deploying 5 or 1000 mobile devices, PC Locs offers products and support to integrate mobile technology seamlessly into your workflow.



## Carrier range of carts

Designed to be universal, the Carrier Carts can charge, store, secure and transport 20, 30 or 40 Chromebooks, tablets, laptops, iPads or just about any other device.<sup>1</sup>

**Baskets:** Features baskets giving users the flexibility to deploy Chromebooks, tablets or iPad devices safely and with ease.

**Top loading design:** Access from multiple sides at once allows for quicker and easier distribution of devices.

**ECO Safe Charge** power management system with a remote controller for safe and efficient charging of all connected devices.

**Secure:** Keep your valuable device investments safe. Lock away devices in the storage area with a padlock.



## Carrier Range of Charging Stations

Charge, store and secure 10 or 15 Chromebooks, tablets, laptops, iPads or just about any other device.<sup>1</sup>

**Baskets:** Features large baskets by PC Locs for just about any device. Baskets enable your fixed station to become portable!

**Secure:** Keep your valuable device investments safe. Lock away devices in the storage area with a padlock.

**Wall or desk mountable:** Transform any wall or counter into a secure area for charging mobiles devices while taking up minimal space.

**Easy cable management:** Simplified cable management to help you set up in minutes so you can gain time using your Charging Station.

Specifications and images are for illustration purposes only. <sup>1</sup> May not fit all devices. Please check the dimensions of the device and the product. <sup>2</sup> Visit [www.pclocs.com.au](http://www.pclocs.com.au) for full warranty details. <sup>3</sup> Free shipping is to almost anywhere in Australia. Some exclusions apply.

**JB** | **SOLUTIONS**  
**HI-FI** | FOR EDUCATION

**1300 730 548**

**[education@jbhifi.com.au](mailto:education@jbhifi.com.au)**

**[jbeducation.com.au](http://jbeducation.com.au)**